



ISM-54F0023W0A

Article number: 221437

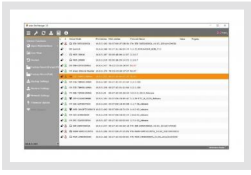
1/3" Network Board Camera, 2592x1520,Day&Night, WDR, 2,3mm, H.265, PoE, 12VDC

1/3" 4.0 MP Omnivision CMOS-Sensor	WDR 120dB, Smart BLC
Resolution max. 2592x1520	Slot for Micro SD memory card
Board Camera 50x50x60,4mm	ONVIF conformance, PoE IEEE802.af, 12VDC
Quad Streaming (H.265, H.264, MJPEG)	Audio-, Alarm- In- and Outputs
True Day & Night (TDN)	Privacy zones, password protection, Cross Web-Browsing
Noise Reduction (2D-/3D-DNR)	Framerate increase on motion detection

Specifications

Camera:		Features:	
Camera type	Platine	Alarm processing	recording internal storage, E-Mail, FTP, Boost, HTTP, TCP, UDP, HTTPS, XML, alarm out
Sensor size	1/3"	Audio	2 Way Audio
Resolution standard	4 Megapixel	Audio support	yes
Imager	CMOS, OmniVision Sensor 4689	Password protection	yes
System	True Day&Night	e-PTZ support	yes
Sensitivity	0,25 Lux, 40IRE	Internal storage	microSDHC card, microSDXC card
Low speed shutter	yes, automatic	Menu languages	English, German, French, Russian, Chinese, Korean, Japanese
Manual electronic shutter (MES)	1~1/1000Sek.	Privacy zones masking	Areas-ON/OFF switchable
Automatic electronic shutter (ESC)	1~1/10.000sec.	Remote configuration	web browser
Wide Dynamic Range (WDR)	WDR 120dB	Web browser	MS internet Explorer: ActiveX ex 9.0, Safari: MJPEG setup limited, Mozilla: MJPEG setup limited, Google: MJPEG setup limited, Edge: MJPEG setup limited
Flickerless function	yes	User interface	Type B (white / blue)
Backlight compensation	Smart BLC	Mirror function	H-flip, mirror
Day/Night switching	auto, day, night	Digital Noise Reduction (DNR)	yes
IR cut filter	switchable		
White balance	automatic, manual	Network:	
Signal-to-noise ratio	50dB	Network protocols	TCP/IP, UDP, IPv4, IPv6, HTTP, HTTPS, FTP, RTP, UPnP, RTSP, RTCP, DHCP, ARP, Zeroconf, Bonjour, QoS, OpenVPN
Video:		Interfaces / Inputs / Outputs:	
Resolution	2592x1520 (16:9), 2560x1440 (16:9), 2304x1296 (16:9), 1920x1080 (16:9), 1440x1080 (4:3), 1280x1024 (5:4), 1024x768 (4:3), 1280x720 (16:9), 800x600 (4:3), 800x480 (16:9), 720x576 (4:3), 720x480 (4:3), 704x576 (4:3), 704x480 (4:3), 640x480 (4:3), 400x240 (4:3), 352x288 (4:3), 352x256 (4:3), 352:240 (4:3), 320x240 (4:3)	Video outputs	no
Resolution max.	2592x1520	External connections	alarm output, alarm input, audio input/output, RJ-45, 12VDC input (DC plug), connection cable approx.55cm
Resolution max. [#1]	VerticalView 90°/270°, 4:3, 16:9, 5:4	Ethernet interface	10Base-T, 100Base-TX
Stream types	Quad Streaming	Alarm inputs	1
Image transmission rate max.	30 fps	Alarm outputs	1
Compression standard	H.264, H.265, H.264+ (Smart Stream), H.265+ (Smart Stream), M-JPEG	Serial interfaces	Ethernet
Lens:		General:	
Lens type	fixed focal length	Dimensions (HxWxD)	50x50x60,4mm
Focal length	2,3 mm	Illumination	no
Digital zoom	yes	Housing	without housing
MOD (Minimum object distance)	0,3 m	Weight	70g
Iris control	no	Power consumption	4.8W
Vertical angle of view	75 °	Blower	no
Horizontal angle of view	130 °	ONVIF	ONVIF Profile S, ONVIF Profile T
DORI:		Power over Ethernet	IEEE 802.3af
Detection (25 px/m)	28 m	SDK	upon request
Observation (62 px/m)	11 m	Supply voltage	12VDC, PoE
Recognition (125 px/m)	5 m	Temperature range (operation)	0°C ~ +40°C
Identification (250 px/m)	2,5 m	Text display	supplied
Features:		Vandalism resistant	no
Multicast compliant	yes	Scope of delivery:	
Motion detector	yes	Parts supplied	manual, Connection cable set
Analysis functions	motion analysis, intrusion, tampering protection, Defog		

Product recommendations



eneo Site Manager | SKU: 218218

