



Quick Start Guide

GU-RN-AC8104P
GU-RN-AC8108P
GU-RN-AC8116P
GU-RN-AP8216N

EN

Quick Guide

About this guide

The guide includes instructions for using and managing the product. Pictures, charts, images and all other information hereinafter are for description and explanation only. The information contained in the guide is subject to change, without notice, due to firmware updates or other reasons.

Please find the latest version at **WWW.GRUNDIG-SECURITY.COM**

Limitation of Liability / Legal Disclaimer

Abetechs GmbH (Grundig Security) undertakes all reasonable efforts to verify the integrity and correctness of the contents in this document, but no formal guarantee shall be provided. Use of this document and the subsequent results shall be entirely on the user's own responsibility. Abetechs GmbH (Grundig Security) reserves the right to change the contents of this document without prior notice. Design and specifications are subject to change without prior notice.

The product described herein, with its hardware, software and documentation is provided "as is", without any warranty, expressed or implies, including without limitation, merchantability, satisfactory quality, fitness for a particular purpose, and non-infringement of a third party.

In no event will our company and its employees or agents be liable to you for any special, consequential, incidental, or indirect damages, including among others, damages for loss of business profits, business interruption, or loss of data or documentation, in connection with the use of this product, even if our company has been advised of the possibility of such damages.

Regarding to products with internet access, the use of the product shall be wholly at your own risks. Our company shall not take any responsibilities for abnormal operation, privacy leakage or other damages resulting from cyber-attack, hacker attack, virus inspection, or other internet security risks; however our company will provide timely technical support if required. Surveillance laws vary by jurisdiction before using this product in order to ensure that your use conforms to the applicable law. Our company shall not be liable in the event that this product is used with illegitimate purposes.

In the event of any conflicts between this manual and the applicable law, the later prevails.

Trademark

Each of trademarks herein is registered. The name of this product and other trademarks mentioned in this manual are the registered trademark of their respective company.

Copyright of this document is reserved. This document shall not be reproduced, distributed or changed, partially or wholly, without formal authorization.

OPEN SOURCE SOFTWARE LICENSE INFORMATION

The software components provided with Grundig products may contain copyrighted software that is licensed under various open-source software licenses. For detailed information about the contained open-source software packages, the used package versions, license information and complete license terms, please refer to the product detail pages on our website www.grundig-security.com. The complete open-source software license

information is also included in firmware files of affected products. Please also check your manuals for additional information.

You may obtain the complete corresponding open-source part of a specific product from us for a period of three years after our last shipment of this product by sending an email to: info@grundig-security.com

Safety and Installation Instruction

Introduction

Please read these instructions carefully and keep them for future reference. You must heed all the warnings and cautions as well as follow all the safety and installation instructions.

The appearance of the products, functions and firmware or software upgrade may differ from this manual.

GRUNDIG reserves the right to perform needed changes without prior notice.

Safety Instructions

Make sure that you only use the power adapter that is specified in the specifications sheet of the product. If you use any other adapter or connect the power supply incorrectly, this may cause explosion, fire, electric shocks or damage the product. Do not connect several devices to one power adapter as this may cause an adapter overload and can lead to over-heating and fire. Make sure that the plug of the power adapter is firmly connected to the power socket.

Do not place containers with liquids on the product. Do not place conducting items like tools, screws, coins or other metal items on the product. These may fall from the product or can cause fire or electric shocks or other physical injuries.

Do not push or insert any sharp items or any objects into the device as this may cause damage to the product, fire, electric shocks and/or physical injuries.

Do not block any ventilation openings, if there are any. Ensure that the product is well ventilated to prevent any over-heating. Do not subject the device to physical shock or drop the product.

If the product uses batteries, please use a battery type that is recommended by the manufacturer. Improper use or replacement of the battery may result in the hazard of explosion.

Do not use any accessories that are not recommended by GRUNDIG. Do not modify the product in any way.

If the product starts to smell or smoke comes out of the device, immediately stop using the product and disconnect it from the power supply to prevent fire or electric shocks. Then contact your dealer or the nearest service center.

If the product does not work correctly, contact your dealer or nearest service center. Never open, disassemble or alter the product yourself. GRUNDIG cannot accept any liability or responsibility for problems caused by attempted and unauthorized repair and maintenance.

Installation Instructions

It is necessary to fix the device firmly if the product is installed on a wall or ceiling. Do not install the product on surfaces or in places that are vibrating. Do not install the product near radiation sources.

Do not install the product near heat sources, like radiators or other equipment that produces some heat. If the product is not classified by any IP class, do not install the product in very cold or hot temperatures (please refer to the working temperature specified in the specification sheet of the product), dusty, dirty or damp environment.

If the product is classified by any IP class, never touch the product cover directly with your fingers, because the acidic sweat of the fingers may damage the surface coating of the product cover. To clean the inside and outside of the product cover, use a soft and dry cloth. In any case, do not use alkaline detergents. The correct configuration of all passwords and other security settings is the sole responsibility of the installer and/or end-user (this applies especially to IP Cameras and Recorders).

Special Installation Instructions for Recorders (NVRs and DVRs)

Make sure that the last actual firmware is installed on the IP Device. You may get the actual firmware from techsupport@grundig-security.com.

Make sure that the product is secured after installation and locate the recorder in safe places where children are not able to reach it.

Make sure the device is properly secured to a rack or shelf. Major shocks or jolts to the unit as a result of dropping it may cause damage to the sensitive electronics within the unit.

Make sure the device is installed in a room that is well-ventilated and dust-free.

Power down the unit before connecting and disconnecting accessories and peripherals.

Only use an HDD for this device that is recommended by GRUNDIG.
The USB flash drive can only be connected to the USB-port of the device.
Use the device in conjunction with an UPS if possible.
To clean the product, gently wipe the outside with a clean dry cloth.

Table of content

1 Rear Panel Interfaces Description.....	9
2 Installation and Connections	11
2.1 NVR Installation.....	11
2.2 HDD Installation	11
3 Menu Operation.....	13
3.1 Startup	13
3.2 Activate Device.....	13
3.3 Set Recover Password.....	14
3.4 User Login	15
3.5 User Logout, Shutdown and Reboot.....	15
3.6 Network Settings.....	16
3.7 Configure Date & Time	17
3.8 Add IP Cameras	17
3.8.1 Auto.....	17
3.8.2 Manual	18
3.9 Live View	18
3.10 Recording Settings.....	19

3.11 Playback	19
4 Accessing by Web Browser	20

1 Rear Panel Interfaces Description

The rear panel interfaces vary with different models. Refer to Table 1-1 for the common interface description of rear panels.

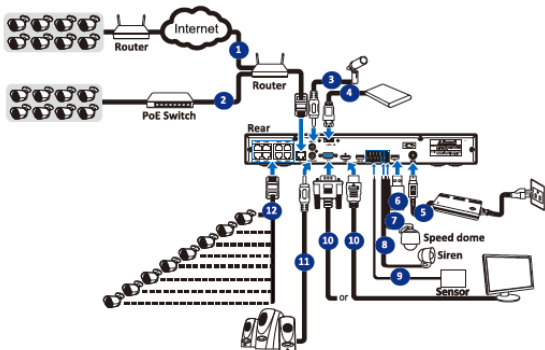


Figure 1-1 Rear Panel

Table 1-1 Common Interfaces Description of Rear Panels

No	Description
1&2	RJ45 Network interface to connect IP-cameras remotely over the Internet or locally.
3	Audio input
4	e-SATA interface

5	Power connector
6	USB-interface
7	RS485-interface
8	Alarm output
9	Alarm input
10	Video output (HDMI, VGA)
11	Audio output
12	PoE-ports for IP-cameras

2 Installation and Connections

2.1 NVR Installation

During installation of the NVR:

- Use brackets for rack mounting.
- Ensure ample room for audio and video cables.
- When routing cables, ensure the bend radius of the cables are no less than five times of its diameter.
- Allow at least 2 cm (≈ 0.75 inch) of space among racks mounted devices.
- Ensure the NVR is grounded.
- Environmental temperature should be within the range of working temperature.
- Environmental humidity should be within the range of 10% to 90%.

2.2 HDD Installation

For NVR that has not been pre-installed HDD, it requires to install HDD for storage.

Before you start

- Ensure power is disconnected.
- Prepare a factory recommended HDD, and cross screwdriver.

Steps

1. Unfasten screws on the back, and push the cover backwards to remove the cover.

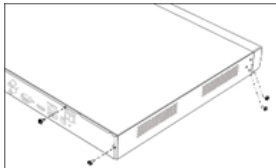


Figure 2-1 remove the cover

2. Connect the data cable and power cable.

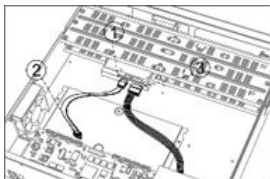


Figure 2-2 connect the cables

3. Match HDD screw threads with the reserved holes on the device bottom, and fix HDD with screws.



Figure 2-2 fix the HDD

3 Menu Operation

3.1 Startup

Proper startup is crucial to expand the life of NVR. It is HIGHLY recommended to use an uninterruptible Power Supply (UPS) with the device.

Step 1 Plug power supply into an electrical outlet.

Step 2 Press the power button (certain models may have power button on the front or rear panel). The device begins to start.

3.2 Activate Device

No operation is allowed before activation. For the first-time access, it requires to set an admin password for device activation. You can also activate the device via web browser or IP-Finder.

Step 1 Enter the same password in **New Password** and **Confirm Password**.

STRONG PASSWORD RECOMMENDED—We highly recommend you create a strong password of your own choosing (Using a minimum of 8 characters, including at least three of the following categories: upper case letters, lower case letters, numbers, and special characters.) in order to increase the security of your product. And we recommend you reset your password regularly, especially in the high security system, resetting the password monthly or weekly can better protect your product.

Step 2 Optionally, check **Security Question Configuration** for password resetting in the future.

Step 3 Click **OK** to save the password and activate the device.

Figure 3-1 shows a 'Password' configuration window. The window title is 'Password'. It contains the following fields:

- Default Username:** A text field containing the value 'admin'.
- New Password:** A text field for entering a new password, currently empty.
- Password Strength:** A progress indicator showing the strength of the password, currently at approximately 33%.
- Confirm Password:** A text field for re-entering the password, currently empty.

An 'OK' button is located in the bottom right corner of the window.

Figure 3-1 Set Admin Password

3.3 Set Recover Password

An admin user can configure security questions to create a recover password in case of resetting password.

Steps

- Step 1 Choose any question from the list and type in your answer.
- Step 2 Repeat this step for questions 2 & 3.

Note

Please keep your answers in mind for the future.

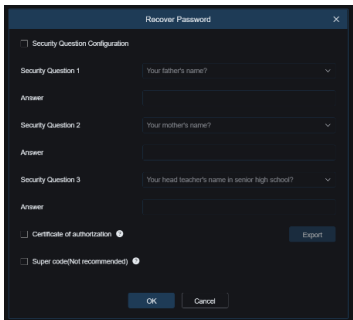


Figure 3-2 Set the recover password

3.4 User Login

You have to log in to the device before operating the menu and other functions.

Step 1 Select **User Name**.

Step 2 Enter password for the selected user.

Step 3 Click **OK** to log in.

Note

If you have entered the wrong password for 5 times, the account will be locked for 180 seconds.

3.5 User Logout, Shutdown and Reboot

You can log out of the system, shut down, or reboot the device.

Step 1 Click  on the menu bar.

Step 2 Click **Logout**, **Shutdown**, or **Reboot** as your desire.

3.6 Network Settings

TCP/IP settings must be properly configured before you can operate the device over a network.

Steps

1. Go to **Setup** → **Network** → **General**

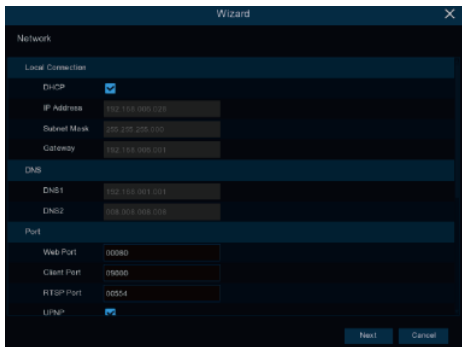


Figure 3-3 TCP/IP setting

2. Configure network parameters as needed.

Note

- Check Enable DHCP to obtain IP settings automatically if a DHCP server is available on the network.

3. Click **Apply**.

3.7 Configure Date & Time

In this menu you can set the Date, Time, Date format, time format, time zone, NTP and DST.

- Step 1 Go to **Setup > System > General > Date and Time.**
- Step 2 Click onto the calendar icon to set the system date.
- Step 3 In the Time field you can set the system time.
- Step 4 Choose from the drop-down menu the date format.
- Step 5 Choose the 24h or 12h time format.
- Step 6 The NTP (Network Time Protocol) settings option allows you to synchronize the date and time automatically from a time server from the internet. To use this option the NVR needs to be online.
- Step 7 Click onto the DST-checkbox to enable the Daylight Saving Time. Select the time offset and the DST mode. Finally set the start and end time for daylight saving.
- Step 8 Click **Apply.**

3.8 Add IP Cameras

Before you can get live video or record the video files, you should add network cameras to the device.

Before you start

Ensure the network connection is valid and correct, and the IP camera to add has already been activated. Please refer to the *User Manual* for activating the inactive IP camera.

There are two options to add cameras to the NVR:

1. Auto (supported from NVR with internal switch only)
2. Manual

3.8.1 Auto

Connect an IP-camera to a PoE-port of the NVR. The recorder will detect the camera automatically and assign an internal IP-address to the it.

3.8.2 Manual


IP-cameras in the same network as the NVR can be added individually to the system.

Steps

Step 1 Go to **Setup > Channel > IP Channels**.

Step 2 Set the Default Password for the protocol (Private, ONVIF, RTSP)

Step 3 Click search to search for IP-cameras in the network.

Click  for cameras you want to add to the system

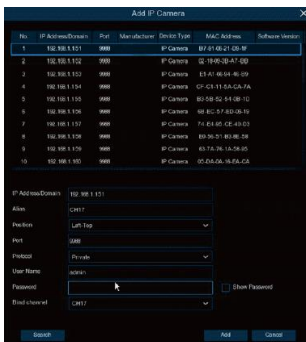


Figure 3-4 Add IP Camera

3.9 Live View

Enter the live view mode

- You can select a split screen window by right click of the connected USB-mouse.
- Use the toolbar in the single window bottom of each channel to achieve functions of capture, instant

playback, audio, digital zoom, stream, PTZ, picture settings, tag, AI-settings and start/stop recording.

3.10 Recording Settings

Before you start

Make sure that the disk has already been installed.

Steps

1. Go to **Setup > Record > Record Schedule**.
2. Select a camera.
3. Select a recording type. The record type can be normal, motion, IO or PIR.
4. Select a day and drag the cursor on the time bar to set the record schedule.
5. Click **Apply**.

3.11 Playback

The recorded video files and pictures on HDD can be played back. Refer to the user manual for details of each playback mode.

Steps

1. Go to Playback.
2. Click onto the calendar icon to select a date.
3. Select camera(s) from the list.
4. Use the toolbar at the bottom to control the playing progress

4 Accessing by Web Browser

You can get access to the device via web browser. The following web browsers are supported: Internet Explorer 10, Apple Safari, Mozilla Firefox, and Google Chrome. The supported resolutions include 1024*768 and above.

Note

The use of the product with Internet access might be under network security risks. For avoidance of any network attacks and information leakage, please strengthen your own protection. If the product does not work properly, please contact with your dealer or the nearest service center.

Steps

Step 1 Open web browser, enter the IP address of the device and then press **Enter**.

Step 2 Log in to the device.

- If the device has not been activated, activate the device first by setting the password for the admin user account.

STRONG PASSWORD RECOMMENDED—We highly recommend you create a strong password of your own choosing (Using a minimum of 8 characters, including at least three of the following categories: upper case letters, lower case letters, numbers, and special characters.) in order to increase the security of your product. And we recommend you reset your password regularly, especially in the high security system, resetting the password monthly or weekly can better protect your product.

- If the device is already activated, enter the user name and password to log in.

Follow the installation prompts to install the plug-in before viewing the live video and managing the device.

Note

- You may have to close the web browser to finish the installation of the plug-in.
- After login, you can perform the operation and configuration of the device, including the live view, playback, log search, configuration, etc.

QG-GU-RN-AC8104P-2022-07-14-V5-EN © ABETECHS GMBH, DÜSSELDORF, GERMANY

grundig-security.com

GRUNDIG