

Side Opening Camera Enclosure




---

## FEATURES

---

- For indoor and outdoor use
- Side opening, easy camera servicing
- Body made of die-cast aluminium
- Concealed Cable Management
- Wall bracket with concealed cable included
- Fan and heater already installed

---

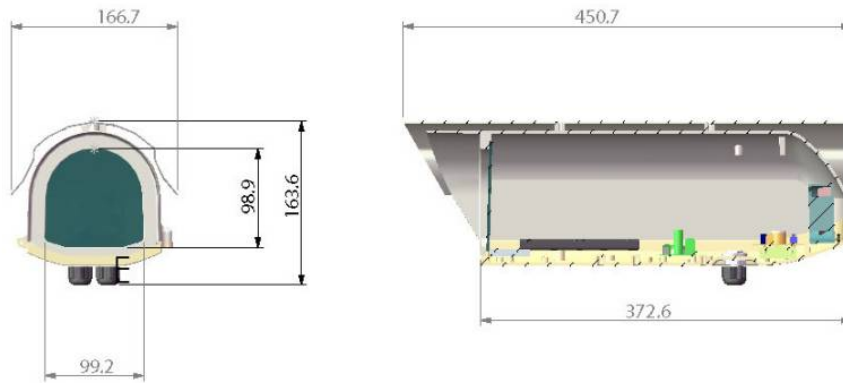
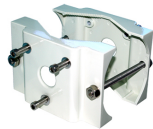
## SPECIFICATIONS

---

Body material	Die cast aluminium
Sunshield material	Aluminium
Protection Rating	IP66
Colour	Cream
Heater	Ton 15°C, Toff 25°C
Cable glands:	2 x PG11
Operating Temperature	-30°C ~ +50°C
Accessories included	Bracket
Supply Voltage	220 ~ 240 VAC/50Hz
Internal usable dimensions (wxhxl)	70 x 70 x 200 or 90 x 60 x 200
Power Consumption	36 W
Weight	1.76 kg
Dimensions w*h*d	166.7 x 163.6 x 450.7 mm

Design and specifications are subject to change without notice

Status 08/2010

**DIMENSIONS****ACCESSORIES****ASTAD623PAH**  
Polemount adaptor**ASTAD623CAH**  
Corner adaptor**ASTAH300CM**  
Ceiling mount